



THE GOLD STANDARD

The most trusted name in fan clutches is now the most trusted name in 2-speed fan clutches. Introducing the all-new 2-Speed GoldTop by Kit Masters.



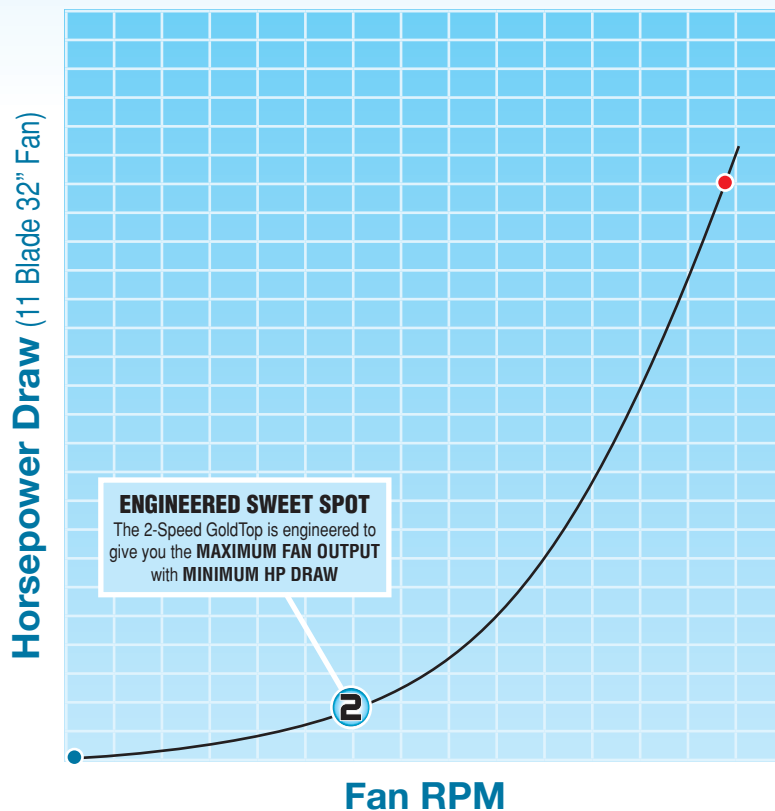
SPEED
GOLDTOP
by Kit Masters

Why use a 2-Speed fan clutch instead of an on/off fan clutch?

In vocational applications, where the fan clutch engagement time exceeds 10% of the engine run time, **SWITCH TO a 2-Speed fan clutch to save horsepower and fuel.**

In a 2-Speed fan clutch, when the fan clutch is disengaged, the fan still rotates at between 15% and 25% of the engine RPM, this fan rotation provides crucial airflow to the engine and **draws virtually no horsepower.**

COOL WITHOUT LOSING HORSEPOWER



- Fan speed when on/off fan clutch is OFF = 80RPM • HP Draw = 0.02
- ② Fan speed when 2-Speed fan clutch is OFF = 300RPM • HP Draw = 0.14
- Fan speed when fan clutch is fully engaged = 1800RPM • HP Draw = 65

*Data based on engine speed of 1800 RPM.

BENEFITS OF CONVERTING TO A 2-SPEED FAN CLUTCH

Horsepower Savings

A fully engaged fan clutch absorbs a massive amount of horsepower. Fewer fan clutch engagements will recapture that lost power.

Improved Fuel Economy

It takes horsepower to drive a fan blade. As you recapture your lost horsepower, you improve fuel economy.

HORSEPOWER SAVED = FUEL MILEAGE EARNED

Longer Fan Clutch Life

A fan clutch has in its life a given amount of engagements. When engaged 10% or less it should last 4-6 years. Increasing engagement cycles reduces life. Providing constant cooling means reducing engagement cycles and this will improve the life of the fan clutch, fan belts and belt tensioner.

Lower Under-Hood Temperatures

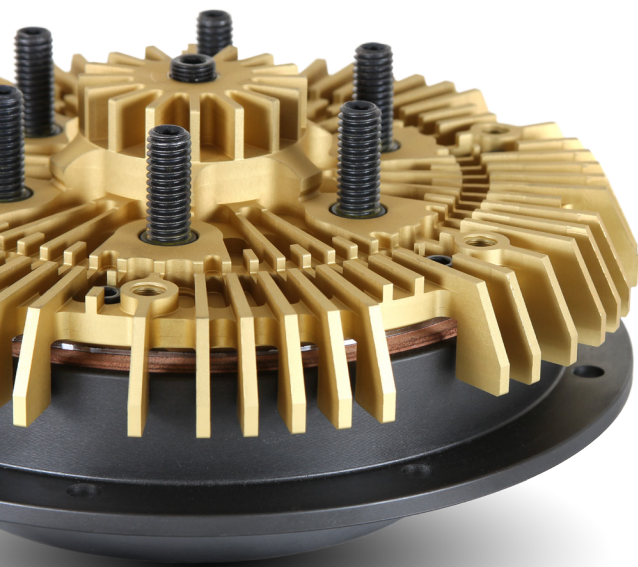
Excessive heat causes stress on your engine and its components. The viscous engagement of the 2-Speed GoldTop provides continual air flow to the engine compartment.

Driver Comfort

A fully engaged fan clutch makes a lot of noise. Fewer engagements will improve driver comfort, a key factor in driver retention.

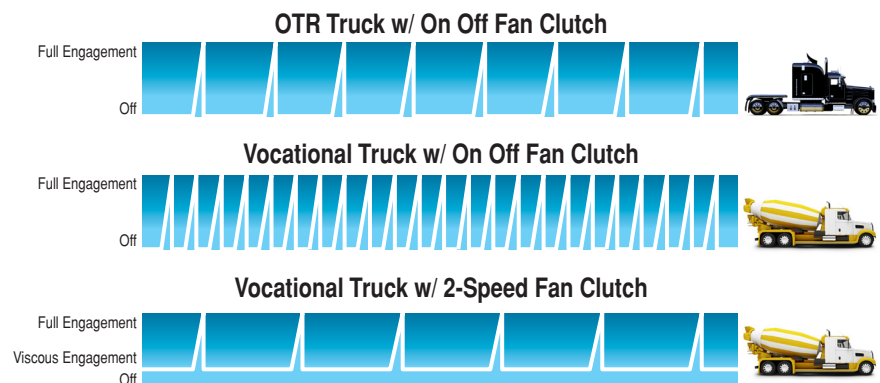
Easy Installation

Kit Masters has been making fan clutch rebuild kits user-friendly for years, and the 2-Speed GoldTop kit continues that tradition. With fewer individual components, installation is a breeze.



Reduce the Frequency of Fan Clutch Engagements

Provide constant air flow without robbing horsepower by utilizing approximately a 15-25% Viscous Engagement. The 2-Speed fan clutch delivers crucial CFM to the engine compartment, keeping a more consistent engine temperature with fewer full fan clutch engagements.



ALL OF THE BENEFITS OF A GOLDTOP, NOW IN A 2-SPEED

The secret to the success of our GoldTop on/off fan clutch is its ability to generate over 5,000 inch-pounds of torque when engaged. Why would we have the 2-Speed GoldTop any other way? With all of that torque, the 2-Speed GoldTop can handle nearly every fan blade on the market without slipping, and therefore preventing unwanted heat that would damage seals and bearings.

Our 2-Speed GoldTop® is unmatched by any competitors (new or remanufactured) & packs over 5,000 inch-pounds of Torque!

One Kit Fits All

When you purchase a 2-Speed GoldTop®, you receive everything you need in one easy to install kit. Compare that to the competitors, who require you to choose between many different kits along with an assortment of separate bearing kits. Our one kit replaces nearly every one of theirs. Having everything in one box ensures that every wearable component will be replaced and your fan clutch will be rebuilt properly the first time!

Highest Torque Rating

With over 5,000 inch-pounds of torque, the 2-Speed GoldTop® will handle nearly all fan blades!

Less Time To Install

Our exclusive design combines nine separate components into **ONE FINAL ASSEMBLY** – this dramatically reduces installation time and installation errors. The 2-Speed GoldTop® installs exactly like our original GoldTop on/off rebuild kit, making it easy for everyone.

Higher Quality Internal Components

- Kevlar impregnated friction material
- Cast on cast construction reduces corrosion and wear
- Elimination of one seal equals one less leak path
- 4-point urethane seal

Fail-Safe Design

Innovative design that will **AUTOMATICALLY LOCK UP** fan clutches when the friction material nears the end of its life.



Lower Cost

Upgrading your fan clutch is as simple as installing the 2-Speed GoldTop® Kit.

- Lower cost vs. new
- Lower cost vs. remanufactured
- Less failures
- Less time to install

Multiple Fan Pilot Configurations

By building the 2-Speed GoldTop® with an interchangeable fan pilot system, it can handle both 2.56" and 5" fan pilots. No need for separate kits!

Guaranteed Fit

The 2-Speed GoldTop® is built with size in mind. Since it's no larger than your original spring-engaged fan clutch, it will fit any application and any fan blade. OEM competitors can't even claim that!

VERSITILITY FOR BETTER COVERAGE

Fan pilot sizes vary. The 2-Speed GoldTop's innovative design allows you to transform the standard 2.56" pilot into a 5" pilot by simply installing a pilot adapter ring and six new fan studs (included). No need to replace your fan or buy a different 2-Speed kit.



2.56" Fan Pilot (standard)



Easily converted to 5" Fan Pilot

KIT MASTERS
FAN CLUTCH EXPERTS

2-SPEED FAN CLUTCH REBUILD/CONVERSION KITS

- Rebuild your current 2-Speed fan clutch, or convert your on/off fan clutch to a 2-Speed. One kit does both!
- Fewer fan clutch engagements
- Better fuel mileage
- Highest torque rating
- Less time to install
- Interchangeable fan pilots
- Lower Cost
- 200,000 mile/2 year warranty
- No need for separate bearing kit
- Higher quality internal components



Part Numbers: **24-256 • 24-256-1 • 24-200**

2-SPEED REMANS AVAILABLE

Any GoldTop Remanufactured Fan Clutch may be ordered as a 2-speed fan clutch by adding the **-2** suffix to the part number.

EXAMPLE:



PART # 99494

Standard GoldTop On/Off
Remanufactured Fan Clutch

OR



PART # 99494-2

2-Speed GoldTop
Remanufactured Fan Clutch

DISTRIBUTOR LOGO & INFO HERE